

# Bronze & Aluminum Plaques

Allstate's Cast Aluminum and Bronze Plaques are made with the finest materials, using the latest technology. Your plaques can be manufactured and on the road in 8-10 days. Other manufacturers charge extra for this kind of delivery schedule. Recognize someone for a job well done, a retirement, winning an award or commemorate a historic place/event.



**BRONZE**

## How to Order:

1. Choose Bronze or Aluminum
2. Choose Size
3. Choose Background Color
4. Choose Border Style
5. Choose Mounting Method
6. Choose Background Texture
7. Choose Rosettes (Optional)



**ALUMINUM**

Catalog #	Size	Price
C-69B1	6" x 9"	\$285.40
C-810B1	8" x 10"	\$352.80
C-1012B1	10" x 12"	\$446.60
C-1014B1	10" x 14"	\$492.00
C-1214B1	12" x 14"	\$558.00
C-1416B1	14" x 16"	\$685.20
C-1218B1	12" x 18"	\$658.80
C-1620B1	16" x 20"	\$972.00
C-1824B1	18" x 24"	\$1310.40
C-2430B1	24" x 30"	\$2188.00

Custom sizes and shapes available. Call for more information.

Catalog #	Size	Price
C-69A1	6" x 9"	\$215.00
C-810A1	8" x 10"	\$247.25
C-1012A1	10" x 12"	\$276.00
C-1014A1	10" x 14"	\$302.75
C-1214A1	12" x 14"	\$336.00
C-1416A1	14" x 16"	\$397.00
C-1218A1	12" x 18"	\$391.00
C-1620A1	16" x 20"	\$592.00
C-1824A1	18" x 24"	\$766.00
C-2430A1	24" x 30"	\$1276.00

## Background Colors (Other colors available)



Black



Brown

## Border Styles

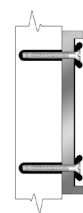


## Mounting Methods



### Blind Mount

Threaded rods screw into back of plaque and are inserted into cement-filled holes.



### Solid Wall Mount

Machine screws through optional rosettes into cement filled holes. Lead shields available for masonry.



### Hollow Wall Mount

Installation using toggle bolts with optional rosettes for hollow or drywall mount.



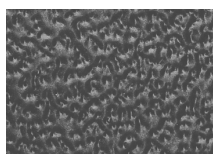
### Wood Mount

Installation into wood surfaces using wood screws and optional rosettes.

## Background Textures



Sand



Leatherette



Stipple

## Rosettes (Optional)



R-3



R-4



R-6